



MBA

YASIR ALI CLASSES

PRACTICE PAPERS

MBA

Previous Years
**Question
Papers**



Website : www.yasiraliclasses.in

Q1. Economic Survey' is published by:

- (a) Ministry of Finance
- (b) Niti Aayog
- (c) Government of India
- (d) Indian Statistical Institute

Q2. The idea of the 'currency convertibility' as it is used by the economies today, originated in which of the following?

- (a) Marshall Plan
- (b) Washington Consensus
- (c) Geneva Convention
- (d) None of the above

Q3. The Lokpal and Lokayukta Act was enacted in India, in the year.

- (a) 2014
- (b) 2013
- (c) 2012
- (d) 2011

Q4. The Chief Election Commissioner of India is appointed by :

- (a) Prime Minister
- (b) Parliament
- (c) President
- (d) Chief Justice of India

Q5. 'Smart Money' is a term used for :

- (a) Internet Banking
- (b) Credit Card
- (c) Cash with Bank
- (d) Cash with Public

Q6. VAT is imposed

- (a) Directly on consumer
- (b) On final stage of production
- (c) On first stage of production
- (d) on all stages between production and final sale

Q7. The largest contribution in India's National income is from .

- (a) Primary Sector
- (b) Secondary Sector
- (c) Tertiary Sector
- (d) Any of these

Q8. Which of the following organizations look after the credit needs of agriculture and Rural Development in India?

- (a) FCI
- (b) IDBI
- (c) NABARD
- (d) TAR

Q9. Aam Aadmi Bima Yojana provides social security to :

- (a) All labours in rural areas
- (b) All landless labours living below poverty line in rural areas
- (c) All labours in urban areas
- (d) All labours in both rural as well as urban areas

Q10. The proposed name for the Indian Crypto currency is

- (a) RC0in
- (b) Lakshmi
- (c) E-Rupya
- (d) Ethereum

Q11. What Was the Manhattan Project?

- (a) Secret Endeavour to build Atom Bomb
- (b) Christopher Nolan's Unreleased Film
- (c) An UN Plan to Combat an Alien Invasion
- (d) A monument planned at 9/1 1 Site

Q12. Which of the following cities was declared as the cleanest city in India under Swachh Sarvekshan-2017 ?

- (a) Surat
- (b) Bhopal
- (c) Indore
- (d) Jaipur

Q13. Which one of the following countries is the other country along -with India to become a member in the Shanghai Cooperation Organization (SCO) in 2017?

- (a) Afghanistan
- (b) Pakistan
- (c) Iran
- (d) Turkey

Q14. Which of the following planets is the brightest?

- (a) Jupiter
- (b) Mercury
- (c) Mars
- (d) Venus

Q15. Parliament of India consists of the

- (A) President
- (B) Rajya Sabha
- (C) Lok Sabha

(D) Vice-President

Select the correct answer using codes given below

(a) A, B & C

(b) B & C

(c) B, C & D

(d) A, B, C & D

Q16. One of the socio-economic programmes launched by Govt. of India, named "SWAYAM", is related to :

(a) Online study

(b) Startup

(c) Swachhata

(d) Smart City

Q17. Masulipatnam was given to the French by :

(a) Chanda Sahib

(b) Hyder Ali

(c) Tipu

(d) Nizam

Q18. The first Viceroy of the British in India was :

(a) Lord Clive

(b) Warren Hastings

(c) Lord Canning

(d) Lord Dalhousie

development

Q19. Which state became the first in India to incorporate skill development programme in higher education?

(a) Rajasthan

(b) Maharashtra

(c) Madhya Pradesh

(d) Gujarat

Q20. In the abbreviation ATM, what does 'M' stand for?

(a) Machine

(b) Mobile

(c) Money

(d) Media

Q21. The first Speaker of the Lok Sabha was .

(a) G. V. Mavlankar

(b) G. M. C. Balayogi

(c) C. B. Gupta

(d) M. A. Ayyangar

Q22. Electron was first identified by

(a) J. J. Thompson

(b) J. Kepler

(c) D. Rutherford

(d) James Chadwick

Q23. Industrial Policy Resolution, 1956 laid emphasis on the role of

(a) Public Sector

(b) Private Sector

(c) Joint Sector

(d) None of these

Q24. International women's Day is celebrated on:

(a) 23 March

(b) 5 September

(c) 8 March

(d) 1 December

Q25. Master Gland in the human body is

(a) Adrenal gland

(b) Salivary gland

(c) Pituitary gland

(d) Sebaceous gland

Q26. Find the chance of throwing more than 15 in one throw with 3 dice

(a) $15/216$

(b) $15/108$

(c) $9/216$

(d) $5/108$

Q27. What change percentage is made in the area of a rectangle by decreasing its length and increasing its breadth by 5%.

(a) No change

(b) Increase by 1%

(c) Decrease of 0.25%

(d) Decrease by 5%

Q28. A trader allows a discount of 5% for cash payment. How much percentage above the cost price must he mark his goods to make a profit of 10%?

(a) 112.50

(b) Rs. 122.75

(c) Rs. 115.79

(d) 125.00

Q29. If the Compound interest on a certain sum for three years at 5% be Rs. 50.44, what would be the simple interest?

(a) Rs. 48

(b) Rs. 45

(c) Rs. 44

(d) Rs. 40

Q30. A man buys milk at Rs. 50 per litre and after adding water, sells it at Rs. 60 per litre thereby making a profit of $33\frac{1}{3}\%$. Find the proportion of water he has added?

- (a) 1:9 (b) 1: 13
(c) 1:4 (d) 1:7

Q31. A number of two digits is equal to three times the sum of the digits. Find the number

- (a) 36 (b) 49
(c) 27 (d) 64

Q32. In a class of 100, 64% of the students take Politics and 56% of the students have taken History. How many students have taken both the subjects?

- (a) 30% (b) 20%
(c) 15% (d) 10%

Q33. A father can do a certain job in x hours. His son takes twice as long to do the job. Working together, they can do the job in 6 hours. How many hours does it take the father to do the job ?

- (a) 9 hours (b) 18 hours
(c) 12 hours (d) 20 hours

Q34. If the first odd no. is 1, (the second odd no. 3 and so on. What is the 200th odd number ?

- (a) 199 (b) 299
(c) 399 (d) 499

Q35. The total age of seven friends is 147. average age of the friends after 4 years would be

- (a) 22 (b) 23
(c) 24 (d) 25

Q36. If the length and width of a rectangle are both tripled, the ratio of the area of the original rectangle to the area of the enlarged rectangle is ?

- (a) 1:3 (b) 1:6
(c) 1:9 (d) 1 : 18

Q37. The number whose 7% is 35, is :

- (a) 500 (b) 400
(c) 300 (d) 200

Q38. A father gives 1 % of his monthly salary to his two sons as pocket money the elder son gets 80% of the total amount given to the two sons and he spend 80% of his share. If he saves Rs 20 every month, then the monthly salary of the father is

- (a) 10000 (b) 11500
(c) 12000 (d) 12500

Q39. From 5 litres of 20% solution of alcohol in water, 2 litres of solution is taken out and 2 litres of water is added to it. The strength of the alcohol in the new Solution is

- (a) 12% (b) 15%
(c) 16% (d) 18%

Q40. The square root of $(5\sqrt{2}-\sqrt{3})$ is

- (a) $2\sqrt{3-\sqrt{2}}$ (b) $\sqrt{3-\sqrt{2}}$
(c) $2\sqrt{2-\sqrt{3}}$ (d) $\sqrt{3+\sqrt{2}}$

Q41. The weight of a container full of water is 28 kg. When it is $\frac{1}{4}$ full, it weighs 19 kg. its weight when it is $\frac{2}{3}$ full of water , will be

- (a) 80 kg (b) 20kg
(c) 24 kg (d) 18.6 kg

Q42. If $x+y=\sqrt{3}$ and $x-y=\sqrt{2}$. Then $8xy(x^2+y^2)$ is:

- (a) 1 (b) $\sqrt{2}$
(c) $8\sqrt{6}$ (d) 5

Q43. A boy was asked to multiply a certain number by 53. By mistake, he multiplied it by 35 and got his answer less than the correct one by 1206. The number to be multiplied was

- (a) 62 (b) 67
(c) 74 (d) 76

Q44. If $x * y = x + y + 1$ and $2P * 50$, then the value of p must be

- (a) 5 (b) 6
(c) 7 (d) 8

Q45. Which of the following numbers is exactly divisible by 99?

- (a) 114345 (b) 3572404
(c) 135792 (d) 913464

Q46. In a book, containing 20 pages or 10 sheets (i.e., one sheet comprises 2 pages), one sheet is missing. Sum of the page numbers of the remaining pages is 195. The page numbers written on both the sides of the missing sheets must be

- (a) 9, 10 (b) 5, 6
(c) 11, 12 (d) 7, 8

Q47. The efficiencies of two workmen A and B are in the ratio 5: 4. If A can do a piece of work in 12 hours, then B can do it in

- (a) 18 hours (b) 16.5 hours
(c) 16 hours (d) 15 hours

Q49. The average of 25 results is 18. The average of first 12 of them is 14 and that of the last 12 is 17. The thirteenth result is

- (a) 28 (b) 78
(c) 72 (d) 85

Q49. The difference of the squares of two numbers is 80 % of the sum of their squares. The ratio of the larger number to the smaller number is

- (a) 5:2 (b) 2:5
(c) 3:1 (d) 1:3

Q50. A person bought an article on 40% discount and sold it at 50% more than the market price. What profit did he get?

- (a) 160% (b) 150%
(c) 90% (d) 50%

Read the passage and answer questions 51-55.

The human race has never faced a challenge bigger and more complex than climate change. It is a challenge that our politics and societies, organized the interests of individuals and groups, are unable to take on. Fighting climate change requires an entirely new paradigm, and ways of thinking and acting. Two new books capture the crisis dramatically and comprehensively.

The Uninhabitable Earth: Life After Warming by David Wallace-Wells is, in the words of The New York Times reviewer, "a remorseless, near-unbearable account of what we are doing to our planet". Even if collective action manages to keep us to 2 degrees Celsius of warming, we would be facing a world in which "the ice sheets will begin their collapse, global GDP per capita will be cut by 13%, 400 million more people will suffer from water scarcity, major cities in the equatorial band of the planet will become unlivable, and even in the northern latitudes heat waves will kill thousands each summer".

In Losing Earth: A Recent History, Nathaniel Rich observes that "nearly every conversation we have in 2019 about climate change was being held in 1979". It is, says The NYT review, "an account of what went wrong, of how it was that a moment on growing awareness change. and an apparent willingness to act on the knowledge was allowed to dissipate into stasis and inaction".

This happened due to several reasons, the failure of scientists to put across a clear message with sufficient force, and the' actions of politicians and energy companies among them. In Rich's reading therefore, climate change is a tragedy, but it is also a crime.

Q51. According to the passage we are unable to fight climate change because

- (a) people are unwilling to fight climate change
- (b) it is not possible to fight climate change
- (c) our politics and societies are organized around the interests of individuals and groups
- (d) it is a collective responsibility of all

Q52. According to David Wallace-Wells' account

- (a) it is possible to reduce warming by 2 degrees Celsius by collective action
- (b) it is possible to arrest the melting of ice sheets
- (c) it is possible to keep the cities in the equatorial region livable
- (d) it is possible to stop water scarcity in a substantial part of the world

Q53. Which of the following is not true according to Nathaniel Rich? Climate change is a crime because the failure to act happened due to

- (a) the failure of the scientists to put across a clear message with sufficient force

- (b) the actions of the politicians
- (c) lack of awareness
- (d) the actions of the energy companies

Q54. Nathaniel Rich observes that "nearly every conversation we have in 2019 about climate change was being held in 1979".

This implies that,

- (a) no conversation is being done in 2019
- (b) what should have been done in 1979 is being done in 2019
- (c) conversation about climate change was sufficiently done in 1979
- (d) no conversation about climate change was done in 1979

Q.55A synonym of the word 'dissipate' is

- (a) degenerate
- (b) gamer
- (c) aggravate
- (d) aggregate

Q56. Spot the error

Reshma is negligent (1) / of her duty (2) / but not neglectful of (3) / her appearance

- (a) 1
- (b) 2
- (c) 3
- (d) 4

Q57. The Company has been handed over to the new management, Lock, stock and barrel. The underlined idiom means

- (a) completely
- (b) financially
- (c) administratively
- (d) partially

Q58. Spot the error

The information officer at the bank / told his customers /

- (1)
- (2)

that there were several different / kinds of checking accounts available

- (3)
- (4)

- (a) 1 (b) 2
(c) 3 (d) 4

Q59. Spot the error

The first electric lamp / had two carbon rods from which / vapor serves /

- (1) (2) (3)

to conduct the current across the gap

(4)

- (a) 1 (b) 2
(c) 3 (d) 4

Q60. Spot the error

In order to get the visa to U.K. / one must present /

- (1) (2)

a medical report along with / your identification).

- (3) (4)

- (a) 1 (b) 2
(c) 3 (d) 4

Q61. Which of the following is correct ?

- (a) No sooner the guests had arrived than it began to rain.
(b) No sooner the guests arrived than it began to rain.
(c) No sooner had the guests arrived it began to rain
(d) No sooner had the guests arrived than it began to rain.

Q62. Choose the order of the sentences marked A, B, C, D and E to form a logical paragraph.

- A. We have constructed it from unfortunate habits of thought about how to handle spiralling public debt.
B. With much of the global economy apparently trapped in a long and painful austerity-induced slump, it is time to admit that the trap is entirely of our own making.

C. People developed these habits on the basis of the experiences of their and friends: when in debt trouble, one must cut spending and pass through a period of austerity until the burden (debt relative to income) is reduced.

D. It seems like common sense, even moral virtue to respond this way. E. That means no meals out for a while, no new cars and no new clothes.

(a) DABCE

(b) BACDE

(c) BACED

(d) DEBAC

Q63. Everything about him, especially his talkative nature, proclaims his effeminacy, Choose the antonym Of the underlined word'

(a) aggressiveness

(b) attractiveness

(c) manliness

(d) boorishness

Q64. It is one of the pernicious customs prevailing in Society. Find the antonym of the underlined word.

(a) permanent

(b) beneficial

(c) parochial

(d) dangerous

Q65. The indiscriminate demand for mass consumption of goods •is deplorable. The underlined word means:

(a) desperate

(b) undifferentiated

(c) discreet

(d) insensitive

Q66. It was an affront to his.....vanity that you should disagree with him.

(a) overstrung

(b) overweening

(c) overwhelming

(d) overwrought

Q67. The corrupt accountant seems to have acted in.....with three others

(a) Collusion

(b) Coalition

(c) Collision

(d) Cohesion

Q68. It is fifteen years since I.....him

(a) have seen

(b) had seen

(c) saw

(d) see

Q69. The idiom 'in a jiffy' means.

(a) a very short time

(b) outstanding

(c) in a fix

(d) appropriate

Q70. It is evident from the minister's statement that heads will roll. The underlined idiom means:

(a) transfers will take place

(b) people will die

(c) dismissals will occur

(d) heads of department will have to repent

Q71. Alam has some coins in the denominations of 2 rupees and 5 rupees, If the total amount with him is Rs. 13, Then how many coins does he have?

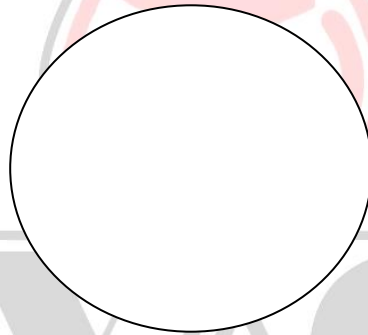
(a) 4

(b) 5

(c) 6

(d) 7

Q72. The following figure is a circle because



(a) it has small area

(b) it can be divided into 8 parts

(c) it has no direction

(d) it has no angle

Q73. If SPAIN is written as 68512 and FRANCE is written as 795243. How is AFRICA coded?

(a) 578915

(b) 579845

(c) 579145

(d) 578945

Q74. In a certain code language, '851' means 'good sweet fruit', '783' means 'good red rose' and '341' mean 'rose and fruit'. Which of the following digits stand for 'sweet' in that language?

(a) 8

(b) 5

(c) 1

(d) 3

Q75. The minimum value of $\frac{b+c}{a} + \frac{c+a}{b} + \frac{a+b}{c}$ where a, b and c are positive integers, is :

- (a) 5 (b) 6
(c) 7 (d) 8

Q76. A man walks 1 km on 1st day, 2 km on the 2nd day, 3 km on 3rd day and so on. Find out the distance covered by the man if he walks in the month of November.

- (a) 465 km (b) 475 km
(c) 455 km (d) 435 km

Q77. Looking at a portrait, a man said, have no brothers and sisters, but this father is my father's son," At whose portrait was the looking at?

- (a) His son (b) His nephew
(c) His father (d) His own

Q78. A person stands in the middle of a wooden ladder and starts slipping between a vertical wall and the floor of a room, while plane. The path traced by a person standing at the middle point of the slipping ladder is

- (a) a straight line (b) an elliptical path
(c) a circular path (d) a parabolic path

Q79. When the time in the wall clock is 3.25 p.m., the acute angle between the hours-hand and the minute-hand is

- (a) 60° (b) 52.5°
(c) 47.5° (d) 42°

Q80. A conveyor belt delivers baggage at the rate of 3 tonnes in 5 minutes and a second conveyor belt delivers baggage at the rate of 1 tonne in 2 minutes. How much time will it take to get 33 tonnes of baggage delivered using both the conveyor belts ?

- (a) 25 minutes 30 seconds (b) 30 minutes
(c) 35 minutes (d) 40 minutes 45 seconds

Q81. A rectangular tank measures 15m x 6m at top and is 10m deep. It is full of water. If water is drawn out lowering the level by 1 meter, how much of water has been drawn out ?

- (a) 90,000 litres (b) 45,000 litres

(c) 4,500 litres

(d) 900 litres

Q82. A person starts from a point A and travels 3 kms eastward to B and then turns left and travels 3 times that distance to reach C. He again turns left and travels 5 times the distance he covered between A and B and reaches his destination D. The shortest distance between the starting point and the final destination is

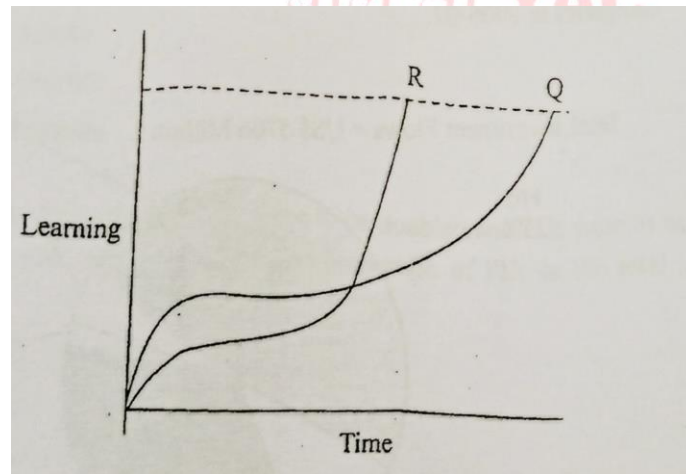
(a) 18km

(b) 16km

(c) 15 km

(d) 12km

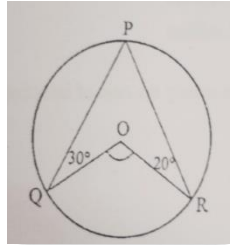
Q83. The following figure represents time vs learning curves of two students, Q and R for learning a Mathematics lesson:



Which of the following can be drawn from the graph?

- (a) R started slowly in the beginning but got ahead of Q to complete learning the lesson
- (b) Q started slowly and finished learning the lesson earlier than R
- (c) R was always faster than Q in learning Mathematics
- (d) Q was always faster than R in learning Mathematics

Q84. In the given figure $\angle LOQP = 30^\circ$ and $\angle LORP = 20^\circ$, then $\angle ZQOR$ is equal to



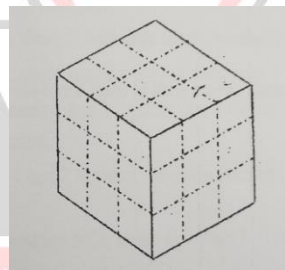
- (a) 100° (b) 120°
(c) 180° (d) 140°

Q85. A bag contains 20 balls, 8 are green, 7 are white and 5 are red. What is minimum number of balls that must be picked up from the bag blind-folded (without replacing any of it) to be assured of picking at least one ball of each colour?

- (a) 4 (b) 7
(c) 11 (d) 16

Instructions for Q. 86 to 90: Interpret the answers of the questions from the data presented in the following paragraph.

A wooden cube is painted Red on all the four adjoining sides and Black on the two opposite sides Top and Bottom. It is then cut at right angles four times horizontally (Top to Bottom) and two times vertically (along the sides). The figure below represents the cube and the dotted lines represent the cuts made. Answer the questions related to the figure below:



Q86, The number of small cubes that can be formed

- (a) 36 (b) 48
(c) 27 (d) 45

Q87. Number Of small cubes with painted in black

- (a) 1 (b) 2
(c) 3 (d) 4

Q88. Number of small cubes with no painted faces

- (a) 1 (b) 2
(c) 3 (d) 4

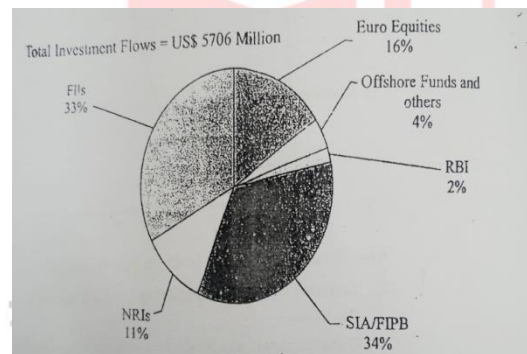
Q89. Number of small cubes with one face painted in Red

- (a) 1 (b) 2
(c) 3 (d) 4

Q90. Number of small cubes with at least three painted sides

- (a) 4 (b) 8
(c) 18 (d) 12

Instructions for Q. 91 to 95: Interpret the answer of the questions from the data presented in the Pie Chart showing the Foreign Investment Flows by different categories 2006-07.



Q91. What was the value of total flows through Euro equities?

- (a) US \$612 million (b) US \$313 million
(c) US \$913 million (d) US \$231 million

Q92. What is approximately the ratio of investment flows through FIIs to NRIs?

- (a) 3:1 (b) 4:3
(c) 5:2 (d) 7:2

Q93. In the FII sector, how many degrees (approximately) should be the central angle?

- (a) 30 degrees (b) 60 degrees
(c) 119 degrees (d) 210 degrees

Q94.If the Total Investment Flow were to be doubled and were to be halved in the next year, what would be the proportion of in the total investment flows?

- (a) 12.5% (b) 6.25%
(c) 17.5% (d) 8.25%

Q95.If the inflows in the RBI were to the tune of US \$ 500 million, What would be the total flows for the year

- (a) US\$15000 million (b) US\$ 25000 million
(c) US\$10000 million (d) US\$12500 million

Instructions for Q. 96 to 100: The problems contain a question and two statements giving certain data. You have to decide whether the data given in the statements are sufficient for answering the questions.

Is the sum of two real numbers a and b even?

1. a and b are positive,
2. a and b are negative.
- (a) If statement 1 alone is sufficient but statement 2 alone is not sufficient.
(b) If statement 2 alone is sufficient but statement 1 alone is not sufficient.
(c) If both statements 1 and 2 together are sufficient but neither of statements alone is sufficient.
(d) If statements 1 and 2 together are not sufficient.

Q97. What is Akbar's age ?

1. In 15 years Akbar will be twice as old as Dias would be.
2. Dias was born 5 years ago.
- (a) If statement 1 alone is sufficient but statement 2 alone is not sufficient.
(b) If statement 2 alone is sufficient but statement 1 alone is not sufficient.
(c) If both statements 1 and 2 together are sufficient but neither of statements alone is sufficient
(d) If statements 1 and 2 together are not sufficient.

Q98. How many girls qualified BCA exam this year?

1. Last year 150 girls qualified.

2. This year there was a 10% decrease over last year in the number of failures.

- (a) If statement alone is sufficient but statement 2 alone is not sufficient
- (b) If statement 2 alone is sufficient but statement 1 alone is not sufficient.
- (c) If both statements 1 and 2 together are sufficient but neither of statements alone is sufficient
- (d) If statements 1 and 2 together are not sufficient.

Q99. What is the value of r ? p, q, r are real numbers.

1. $q-r=r-p$

2. $p+q=10$

- (a) If statement I alone is sufficient but statement 2 alone is not sufficient.
- (b) If statement 2 alone is sufficient but statement alone is not sufficient.
- (c) If both statements I and 2 together are sufficient but neither of statements alone is sufficient.
- (d) If statements I and 2 together are net sufficient.

Q100, What is the distance between city A and C?

1. City A is 40 kms from City B.

2. City B is 30 kms from City C.

- (a) If statement 1 alone is sufficient but statement 2 alone is not sufficient.
- (b) If statement 2 alone is sufficient but statement 1 alone is not sufficient.
- (c) If both statements and 2 together are sufficient but neither of statements alone is sufficient.
- (d) If statements I and 2 together are not sufficient.



WE DEBIT EFFORTS TO CREDIT YOUR SUCCESS

YASIR ALI CLASSES

COMMERCE | CUET | MANAGEMENT | HUMANITIES | LAW

Previous Years

Question Papers



Scan This Code to
SUBSCRIBE
YouTube Channel



Scan This Code to
DOWNLOAD
our Mobile App



Scan This Code to
VISIT
our Website



Scan This Code to
VISIT
Google Map

CALL FOR ADMISSION : 9045417079, 9412617279

H.O : Opp. Shah Ji Dairy, Noor Manzil, Dodhpur, Aligarh | B.O : Abdullah College Road, Marris Road, Aligarh



Download The App Now



/yasiraliclasses



/yasiraliclasses



/yasiraliclasses



www.yasiraliclasses.in